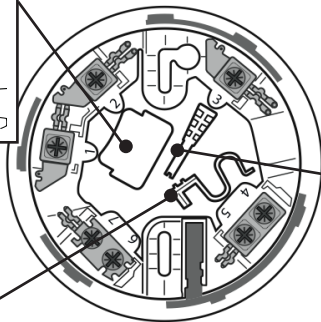
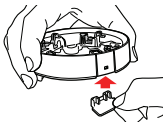


HP408 HUSH-PRO DETECTOR BASE

Remove the optional identification and security tags from the centre of the base and use as shown in steps 1, 2 & 4. See overleaf for wiring details.

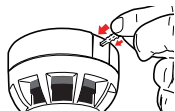
1 Fit the ID tag



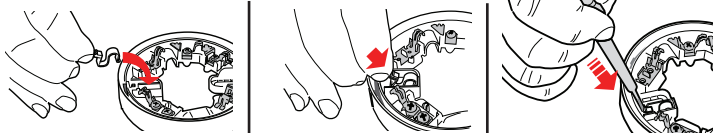
3 Fit the detector head



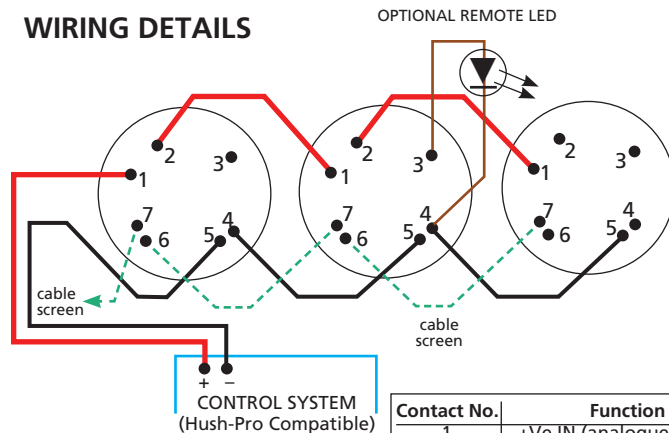
4 Unlocking the detector head



2 Fit the head-base locking mechanism (optional)



WIRING DETAILS



Contact No.	Function
1	+Ve IN (analogue switch)
2	+Ve OUT (analogue switch)
3	Remote LED +Ve
4	0V
5	0V
6	Screen
7	Screen

- Correct polarity must be observed.
- Do not mount bases on uneven surfaces.
- Screened cables are recommended for optimum performance.
- Terminals can accept 0.25 to 2.5mm² wiring.
- Optional connection to a BF318 Remote LED.



Manufacturer: Computationics Limited (C-TEC), Challenge Way, Martland Park, Wigan, Lancashire WN5 0LD. www.c-tec.com

E&OE.

Approved Document No. DFU0002418 Rev 2

05/08/21